

## Bt1855k manual



**File Name:** Bt1855k manual.pdf

**Size:** 2909 KB

**Type:** PDF, ePub, eBook

**Category:** Book

**Uploaded:** 13 May 2019, 14:29 PM

**Rating:** 4.6/5 from 720 votes.

# Download Now!

Please check the box below to proceed.



I'm not a robot



reCAPTCHA  
Privacy - Terms

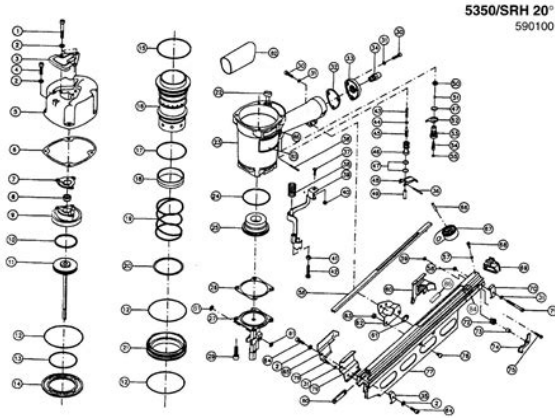
## Book Descriptions:

# Bt1855k manual



Depend on this 18 Gauge Brad Nailer Kit for efficiency and durability. Please check the attached list or your parts breakdown you can search here to assure yours is on it. This is a mechanism that will lock out the trip actuation system so that the tool will not cycle when it is almost out of fasteners. What does this mean? This makes accurate fastener placement easier. It allows exact fastener location without the possibility of driving a second fastener on recoil. 2 Contact Trip Actuation This mode allows the operator to contact the work surface to actuate the trip mechanism while keeping the trigger pulled, thus driving a fastener each time the work surface is contacted. This will allow rapid fastener placement. BT1855K owners should carefully read the Tool Operation and Trip Operation Modes section of the Operation and Maintenance Manual before operating this tool. These are sometimes called safety pads or foot tips. These are small plastic tips that prevent marring of the wood when using a pneumatic nailer. We test for this. When adding oil to the nailer however you end up with oil coming out of the exhaust which is what oilfree tools prevent. Automatic oilers are fine but you need to watch the oiling rate and potential buildup in the tool as it's at the end of the line. Oil can also rob the system of air volume and flow if it builds up causing reduced power, sluggish cycles, and potential skipping. Just make sure when you finish with the nailer, you unplug the tool daily to expel oil and to monitor the oiling rate of the system. The trigger is stuck and will not move. What is wrong? To release it, depress the button on the right hand side of the frame just above the trigger. To activate the trigger lock, depress the same button from the left side of the frame. The fastener control adjustment allows from flush to work surface to shallow or deep countersink. See attached for further instructions. <http://www.ictgeeks.nl/site/data/ws/page/dbx-manuals.xml>

- **bt1855k manual, bostitch bt1855k manual, bt1855k manual.**



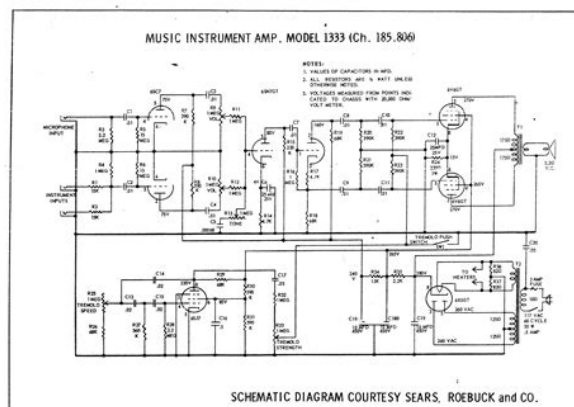
See Updated Privacy Policy or Contact Us at 6275 Millcreek Drive, Mississauga ON, L5N 1L8 for more information. These tools will deliver. Page 3 SAFETY INSTRUCTIONS. EYE PROTECTION which conforms to ANSI specifications and provides protection againstPage 4 TOOL COMPONENTS. Frame Cap OverMoldedFrame ProtectorFrame. Trigger Lockout Trigger. Actuation. Page 5 TOOL SPECIFICATIONS. All dimensions in inches unless otherwise specified.Engine. Page 6 AIR SUPPLY AND CONNECTIONSPage 8 TRIGGER LOCKOUT CONTROL. The trigger lockout control feature on BOSTITCH pneumatic tools providesPage 10 INSTALLING THE BELT HOOKPage 12 JAM CLEARING PROCEDUREOn. Page 13 TOOL OPERATION CHECK. CAUTION Remove all fasteners from tool before performing tool operation check.Page 15 TROUBLESHOOTINGLos modelos Bostitch BT1855 y SX1838 son herramientas construidas a precision, disenadas para funcionar a alta velocidad yEl operador y otros en el area SIEMPRE deben llevar PROTECCION OCULAR en conformidad con las. Page 20 COMPONENTES DE LA HERRAMIENTA. Tapa delProtector delTodas las dimensiones estan en pulgadas a menos que se especifique lo contrario.Page 24 CONTROL DE BLOQUEO DEL GATILLO. La funcion de control de bloqueo del gatillo en las herramientas neumaticas de. BOSTITCH proporciona.Page 27 FUNCIONAMIENTO DE LA HERRAMIENTAPRECAUCION Retire todas las fijaciones de la herramienta antes de revisar como funciona.Page 31 SOLUCION DE PROBLEMASPage 32 ACCESORIOS DISPONIBLESLes BT1855 et SX1838 de Bostitch sont des outils de precision, concus pour la pose d'attaches a haute vitesse. Page 35 CONSIGNES DE SECURITE. DES LUNETTES DE SECURITE se conformant aux normes ANSI et qui protegent des particulesChapeau de couple Poignee mouleeProtecteur de bati Raccord dairBati. Page 37 SPECIFICATIONS DE L'OUTIL. Les mesures sont metriques suivies de mesures imperiales entre parentheses.Page 38 ALIMENTATION DAIR ET CONNEXIONSPage 39 CHARGEMENT DE LA BT1855 ET DE LA SX1838Page 40 COMMANDE DE BLOCAGE DE GACHETTE.<http://cupl.us/fckeditor/editor/filemanager/connectors/php/fckeditor/upload/202009/dbx-manual.xml>



La commande de blocage de gachette des outils pneumatiques BOSTITCH Page 41 AJUSTEMENT DE LA COMMANDE D'ATTACHE Page 42 INSTALLATION DU CROCHET DE CEINTURE ATTENTION Retirez toutes les attaches de l'outil avant d'effectuer une vérification du fonctionnement. Page 46 LISTE DE VÉRIFICATION POUR L'ENTRETIEN Page 47 DEPANNAGE. We know from our users' experience that most of people do not really attach importance to these manuals. Many instructions, immediately after the purchase, go into the trash along with the box, which is a mistake. Get acquainted with the information concerning the manual for Bostitch BT1855K, which will help you to avoid troubles in the future. You will then acquire basic knowledge to maintain Bostitch BT1855K in good operating condition to make it easily reach the intended life cycle. Then you can put away the manual on a shelf and use it again only in a situation where you're not sure whether you perform maintenance of the product appropriately. Proper maintenance is a necessary part of your satisfaction from Bostitch BT1855K. Once a year, clean the closet where you keep all your devices manuals and throw out the ones that you don't use. This will help you maintain order in your home base of manuals. As with any fine power tool, for best performance the manufacturer's instructions must be followed. FITTINGS Install a male plug on the tool which is free flowing and which will release air pressure from the tool when disconnected from the supply source. The BT1855 and SX1838 feature a selectable trigger system that allows the user to choose between the following modes of operation 1. On occasion nails can jam in the nose of a pneumatic nailer. This can be caused by striking a metal plate in the wall, drywall screw, or some other hard object. THE TOOL MUST NOT CYCLE. B. Hold the tool off the work surface, and pull the trigger. Estas herramientas entregan un servicio eficiente y fiable cuando se usan correctamente y con cuidado.

Ocasionalmente pueden atascarse clavos en la punta de una clavadora neumática. Ces outils vous donneront un rendement efficace et fiable lorsqu'ils sont utilisés correctement et avec soin. Il peut arriver que des clous restent bloqués dans le nez poseur de la cloueuse pneumatique. Why is it worth reading If something bad happens while using a Bostitch BT1855K, you will have a set of documents that are required to obtain warranty repairs. It is in this part of the manual that you will also find information about the authorized service points of Bostitch BT1855K as well as how you can properly maintain the device by yourself so as not to lose the warranty for the product. Use the instructions of the Bostitch BT1855K manufacturer to run the product properly, without unnecessary risk of damage to the equipment. You will also be able to find out what optional parts or accessories to Bostitch BT1855K you will be able to find and buy to your device. This is a very useful part of the manual which will save you a lot of time related to finding a solution. 90% of the problems with a Bostitch BT1855K are common to many users. Read to optimally use the Bostitch BT1855K and not to consume more power than is necessary for the proper operation of the product. You will learn what additional features can help you use the product Bostitch BT1855K in a comfortable way and what functions of your device are the best to perform specific tasks. It is good to get acquainted with it to avoid disappointments resulting from a shorter exploitation time of the product Bostitch

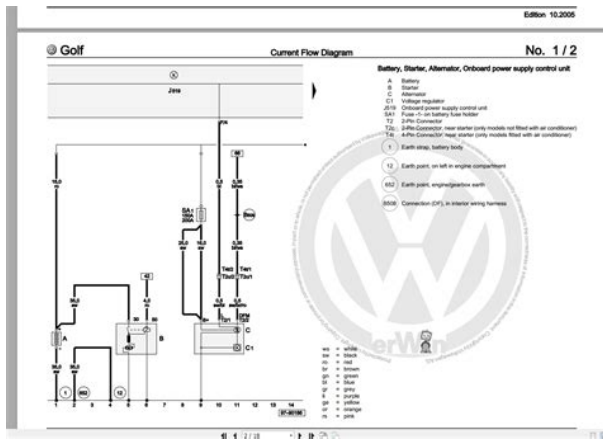
BT1855K than expected. However, if you cannot be convinced to collect manuals at your home, our website will provide you with help. You should find here the manuals for most of your devices, including Bostitch BT1855K. Our payment security system encrypts your information during transmission. We don't share your credit card details with thirdparty sellers, and we don't sell your information to others. Please try again.



<http://www.drupalitalia.org/node/71504>

Please try again. Trigger lockout mode for use when working in occupied spaces. In order to navigate out of this carousel please use your heading shortcut key to navigate to the next or previous heading. In order to navigate out of this carousel please use your heading shortcut key to navigate to the next or previous heading. Register a free business account. Please try your search again later. Depend On This 18 Gauge Brad Nailer Kit For Efficiency And Durability. The tool's weight and balance are complemented by an overmolded grip to help maximize comfort and minimize fatigue during overhead applications or prolonged use. The BT1855K has an oilfree design that requires no maintenance and prevents stains on work surfaces. The selectable trigger system allows for easy conversion between sequential or contact modes. Additionally, the BT1855K features a dial depth control for quick countersinking adjustments and a low fastener lockout that prevents dry fire and alerts the user when its time to reload. The ultraquiet rear exhaust directs air away from the user and the reversible belt hook with integrated pencil sharpener allows for ultimate convenience on the job site. The BT1855K is an excellent choice for interior and exterior trim, cabinetry, furniture, and crafts. Headquartered in New Britain, Connecticut, Bostitch operates multiple manufacturing facilities throughout the globe. What's Included The Bostitch BT1855K 18gauge brad nailer comes with one inch fitting, one carrying case, one hex wrench, and one belt hook. To calculate the overall star rating and percentage breakdown by star, we don't use a simple average. Instead, our system considers things like how recent a review is and if the reviewer bought the item on Amazon. It also analyzes reviews to verify trustworthiness. Please try again later. Jim D 5.0 out of 5 stars I bought the high end Makita from Amazon and was horribly dissapointed and sent that back. See reviews under that unit.

<http://demenagementlandry.com/images/bosch-ts1000-manual.pdf>



Plus the gun mared softwoods on almost every drive. I love my other Makita tools, but sad to see such an inferior product put out by them. I have 3 sets of staircases and balconies to do the finish carpentry on, and will be driving 100s of toenails on the balusters. I highly recommend this Bostitch brad nailer gun. You will be glad you did. Hope the review helps your purch decision. If yes, give it a thumbs up vote. Thanks JimThe Makita is older technology and I think Ill go on using that whenever it comes back from the repair shop. That said, this one has been working well. It doesnt have a dryfire lockout, which I find a little annoying, but otherwise its an oilless design and you can, with some experience, reliably put a brad exactly where you want it. The depth setting mechanism seems a little lightweight plastic but in use, the nails all get countersunk or set flush to the correct depth, tlike after time, so long as you hold the gun correctly when firing it. I havent had a jam or misfire yet. You can place brads in tight places in moulding reliefs because of the narrow tip. The plastic tip reliably prevents nose from marring of the workpiece. In terms of performance, theres nothing to complain about. The gun is noticeably lighter than my old Makita. The firing noise is the same as any other brad nailer, so I disagree with another reviewer who thought the noise was louder. Given the low price of this gun, I think its performance is first rate. I would have given it five stars if it had a dryfire lockout instead of the silly little window that shows the gun is empty after the brads run out and youve shot blank holes in the workpiece.If theres any dust on the surface like there often is it kicks it up in your face. The other problem is the door that opens in order to clear a jam hardly opens at all so its hard to get the jam out.

<https://www.dermatina100.gr/images/bosch-trimmer-art-23-manual.pdf>





It could easily open 90 degrees if the shape of the door had been designed slightly differently like most every other brad nailer out there that has a door that hinges 90 degrees. A few very stupid design elements makes me wonder if the tool is even tested in a real work environment. Ill stick with my old porter cable it doesnt kick up dust in my face all the time and I can easily clear a jam. I also got the packet of Senco A209909 mixed brads. They are great too. As an amateur I couldnt understand why I was having problems with nails skewing out the side, if you get my drift. It made me wonder whether I had got the right brad nailer. Then I spotted something on YouTube and realised that I was holding the gun parallel instead of perpendicular to the bottom piece of wood. Brad nails, for airguns, have a V shaped tip and they skew left or right. This very simple fact is taken for granted by experts but would have saved me quite a bit of grief and time if I had known it earlier. Lots of fun!! Ive been running the gun at 120 psi and it hums. However I see you are supposed to run it at the lightest needed to do the job, which is likely around 90 psi. The only other thought is that it claims to be oilless. However, a manufacturers comment is to put a couple of drops of air tool oil into the air intake coupler. I havent any airtool oil and wondered if sewing machine oil would do the same trick. Its a tidy compact, well made and fun unit. Light and easy to use. I used it several times a day for three months when it quit working. Warranty repair said an O ring failed preventing the hammer from resetting. I will keep using it and keep my fingers crossed. From reviews before I bought it, I expected trouble free operation for at least a couple years. It replaced an old 18 gauge gun I had bought used from a neighbor who was moving. I had no idea what I was missing.

Quality construction, no jams, and the nailing point makes it easy to shoot nails in at an angle where my other one had to be depressed fully before it would nail, making angles very difficult or impossible. Ive used it on installing a new exterior door where a window used to be and on the exterior stairs going up to the door as a temporary hold. I look forward to using this on many many projects—seems like it will last a very long time but Ill keep my review updated! If that's a big deal to you, this gun isn't for you. Really annoying when you're in a roll slamming in a bunch of nails only to find that the wood had a bunch of empty holes. I get tired of checking the mag every time. Apart from that it is flawless. I bought another two, so it's a fantastic gun. It's in my hand most of the day so a good ergonomic grip is nice to have. Just giving people a heads up on the lack of dry fire lock out. Sorry, we failed to record your vote. Please try again The tip is tiny which is perfect for accurately placing nails, the smart tip is nice because its easier to position the tip and doesnt push the work piece around during assembly. The belt hook is nice and its easy to swap it from one side to the other, also has a built in pencil sharpener which is actually not bad and works well. I added a swivel air fitting and love it. Overall Im very happy with this gun, Id buy it again. Sorry, we failed to record your vote. Please try again It was part of the probe safety system. Calls to a Canadian customer service number ended up in the USA who told me they could not see Canadian Service Centers on their computers. I was transferred to an automated system where I was asked to put in my postal code to find a service center. The system kept responding NUL company, NUL address, etc. After contacting a Bostitch distributor an hour away they sent me to a local business. They reinstalled the spring with a lot of work and said to expect it to fail again.

<https://trecraftsmanship.com/wp-content/plugins/formcraft/file-upload/server/content/files/1626c2f1a3a109--1050c-designjet-service-manual.pdf>

I have a collection of King tool nailers of different sizes which have worked flawlessly for decades. This has been an expensive bad experience. Sorry, we failed to record your vote. Please try again Decided to go with Amazon Prime and not only was there price cheapest they beat the std estimated delivery time and it was here ready to use. This gun has pinpoint accuracy and leaves little to no open shot exposure requiring fill. No surface strike marks either. If you have mouldings to apply. Sorry, we failed to record your vote. Please try again Amazing little gun. No oil feature is a huge bonus. Very light weight. Only played around with it in the shop but will be using it to lay DIY

plywood plank floors upstairs to replace the 1991 carpet. Will edit review once job is done as in will be firing a few thousand nails. Im sure it wont give me any issues. Sorry, we failed to record your vote. Please try again The nailer works as designed for light to medium duty projects around the house and I did not want to spend anymore for an oil free 18 gauge nailer than necessary. The nailer will spend most of its life stored in the basement, but when I do need it for a few nailing projects, its there waiting to be used. No sense costwise renting each time I need the nailer or even taking a risk in buying the tool used. Bostitch is a respected name in the business and is a brand that should be considered in your choice. Sorry, we failed to record your vote. Please try again The nomar tip doesnt leave any marks, but I find that you really have to be good with adjusting the depth otherwise the hammer part will leave marks. The precision on this thing is freaking awesome though you can place your nail EXACTLY where you want it every time. Love it! Sorry, we failed to record your vote. Please try again After a year of minimal use it started to misfire. Went online for warranty info and said 3 year warranty. The Bostitch customer service people send me to the service people in my area.

[BAWANIINT.COM/ckfinder/userfiles/files/canon-ixus-60-user-manual-pdf](http://BAWANIINT.COM/ckfinder/userfiles/files/canon-ixus-60-user-manual-pdf)

Spoke to them and they told me there was no warranty and the U.S. customer service people didn't know what they were talking about. The repair cost was more than I paid for the nailer. I may as well buy a new nailer. It won't be Bostitch this time. Sorry, we failed to record your vote. Please try again Ive always had good results with Bostitch guns, and they last. Hardly ever have jammed nails, except my previous guns didnt like the Porter Cable nail which would jam. So as long as you use Bostitch nails or Pastlode nails, jams are almost seldom. At least this new gun makes it easier to clear jammed nails. Sorry, we failed to record your vote. Please try again Robust and I like the feeling of it in my hand. Sorry, we failed to record your vote. Please try again I have not used it alot yet and will update as to the durability when i put more nails through it. Sorry, we failed to record your vote. Please try again Not a single issue with it. Worked like a charm, not a single jam with it. Used various sized nail lengths with it also. Great product from Bostitch !! Sorry, we failed to record your vote. Please try again Consistent fastener depth drive, quiet, didnt misfire or jam. Some real thoughtful engineering went into this product. Would recommend. Sorry, we failed to record your vote. Please try again Arrived in time. The small tip is a great feature for exact placement of nails. Another great feature is the ability to counter sink the nail to the desided depth. Would recommend this product and seller any time. Thanks. Sorry, we failed to record your vote. Please try again With the Bostitch smart tip the mark is no larger then the brad nail. Doesnt misfire and its a good size. Sorry, we failed to record your vote. Please try again In order to navigate out of this carousel please use your heading shortcut key to navigate to the next or previous heading. As with any fine power t ool, for best performance the manufacturer's instructions must be followed.

Please study this manual before operating the tool and understand the safety warnings and cautions. The instructions on installation, operation and maintenance should be read carefully, and the manuals kept for reference. NOTE Additional safety measures may be required because of your particular application of the tool. Contact your Bostitch representative or distributor with any questions concerning the tool and its use. Bostitch, Inc., East Greenwich, Rhode Island 02818. Bostitch cannot assume responsibility for product performance if our tools are used with fasteners or accessories not meeting the specific requirements established for genuine Bostitch nails, staples and accessories. LIMITED WARRANTY — U.S. and Canada Only Effective December 1, 2005 Bostitch, L.P. warrants to the original retail purchaser that the product purchased is free from defects in material and workmanship, and agrees to repair or replace, at Bostitch's option, any defective Bostitch branded pneumatic staple or nailer for a period of seven years from date of purchase or one year from the date of purchase for compressor and tools used in production applications. Warranty is not transferable. Proof of purchase date required. This warranty covers only damage resulting from defects in ma



ter ial o r wor kma nsh ip; i t doe s not c ove r co ndi tio ns or m alf unc tio ns re sul tin g fro m nor mal wear, ne gl ect, abu se, a cci den t or re pai rs at tem pte d or ma de by o the r th an ou r nat ion al re pai r cen ter o r aut hor ize d war ran ty se rvi ce ce nte rs. D riv er blade s, bu mpe rs, o ri ngs, pis ton s and pi sto n rin gs ar e con sid ere d nor mal ly we ari ng pa rts. For o pti mal p erf orm anc e of yo ur Bo sti tch t ool a lwa ys us e gen uin e Bo sti tch f ast ene rs an d rep lac eme nt pa rts.

Eye protection is required to guard against flying fasteners and debris, which could cause severe eye injury. Eye protection equipment must conform to the requirements of the American National Standards Institute, ANSI Z87.1 and provide both frontal and side protection. NO TE Nonside shielded spectacles and face shields alone do not provide adequate protection. C A UTION Additional Safety Protection will be required in some environments. For example, the working area may include exposure to noise level which can lead to hearing damage. The employer and user must ensure that any necessary hearing protection is provided and used by the operator and others in the work area. Some environments will require the use of head protection equipment. When required, the employer and user must ensure that head protection conforming to ANSI Z89.1 is used. AIR SUPPLY AND CONNECTIONS Do not use oxygen, combustible gases, or bottled gases as a power source for this tool as tool may explode, possibly causing injury. Do not use supply sources which can potentially exceed 200 P.S.I.G. as tool may burst, possibly causing injury. The connector on the tool must not hold pressure when air supply is disconnected. If a wrong fitting is used, the tool can remain charged with air after disconnecting and thus will be able to drive a fastener even after the air line is disconnected possibly causing injury. Do not pull trigger or depress contact arm while connected to the air supply as the tool may cycle, possibly causing injury. Always disconnect air supply 1. Before making adjustments; 2. When servicing the tool; 3. When clearing a jam; 4. When tool is not in use; 5. When moving to a different work area, as accidental actuation may occur, possibly causing injury. L O ADING T OOL When loading tool 1. Never place a hand or any part of body in fastener discharge area of tool; 2. Never point tool at anyone; 3.

Do not pull the trigger or depress the trip as accidental actuation may occur, possibly causing injury. OPERA TION Always handle the tool with care 1. Never engage in horsing play; 2. Never pull the trigger unless nose is directed to ward the work; 3. Keep others at a safe distance from the tool while tool is in operation as accidental actuation may occur, possibly causing injury. The operator must not hold the trigger pulled on contact arm tools except during fastening operation as serious injury could result if the trip accidentally contacted someone or something, causing the tool to cycle. Keep hands and body away from the discharge area of the tool. A contact arm tool may bounce from the recoil of driving a fastener and an unwanted second fastener may be driven possibly causing injury. Check operation of the contact arm mechanism frequently. Do not use the tool if the arm is not working correctly as accidental driving of a fastener may result. Do not interfere with the proper operation of the contact arm mechanism. Do not drive fasteners on top of other fasteners or with the tool at an overly steep angle as this may cause deflection of fasteners which could cause injury. Do not drive fasteners close to the edge of the work piece as the wood may split, allowing the fastener to be deflected possibly causing injury. This nailer produces SPARKS during operation. NEVER use the nailer near flammable substances, gases or vapors including lacquer, paint, benzene, thinner, gasoline, adhesives, mastics, glues or any other material that is or the vapors, fumes or by products of which are flammable, combustible or explosive. Using the nailer in any such environment could cause an EXPLOSION resulting in personal injury or death to user and bystanders.

MAINTAINING THE TOOL When working on air tools note the warnings in this manual and use extra care when evaluating problem tools. BOSTITCH cannot assume responsibility for product

performance if our tools are used with fasteners or accessories not meeting the specific requirements established for genuine BOSTITCH fasteners and accessories. FITTINGS Install a male plug on the tool which is free flowing and which will release air pressure from the tool when disconnected from the supply source. The supply hose should contain a fitting that will provide "quick disconnecting" from the male plug on the tool. SUPPLY SOURCE Use only clean regulated compressed air as a power source for this tool. The air supply must be capable of maintaining the operating pressure at the tool. Pressure drops in the air supply can reduce the tool's driving power. Refer to "TOOL SPECIFICATIONS" for setting the correct operating pressure for the tool. FILTER Dirt and water in the air supply are major causes of wear in pneumatic tools. A filter will help to get the best performance and minimum wear from the tool. The filter must have adequate flow capacity for the specific installation. The filter has to be kept clean to be effective in providing clean compressed air to the tool. Consult the manufacturer's instructions on proper maintenance of your filter. A dirty and clogged filter will cause a pressure drop which will reduce the tool's performance. Quick Connect Plug Quick Disconnect Plug Eye protection equipment must conform to the requirements of the American National Standards Institute, ANSI Z87.1 and provide both frontal and side protection. NOTE Nonside shielded spectacles and face shields alone do not provide adequate protection. LOADING THE SX1838 LOADING THE BT1855 1. Depress magazine release button and pull back magazine. 2. Open magazine fully and turn tool sideways with discharge area pointed away from yourself and others.

Load staples in channel. 3. Push magazine forward until latch is engaged. 1. Depress magazine release button and pull back magazine. 2. Open magazine fully and turn tool sideways with discharge area pointed away from yourself and others. Load brads in channel. 3. Push magazine forward until latch is engaged. The BT1855 and SX1838 feature a selectable trigger system that allows the user to choose between the following modes of operation 1. Contact Trip Operation 2. Sequential Trip Operation 1. CONTACT TRIP The common operation procedure on "Contact Trip" tools is for the operator to contact the work surface to actuate the trip mechanism while keeping the trigger pulled, thus driving a fastener each time the work surface is contacted. This will allow rapid fastener placement on many jobs. All pneumatic tools are subject to recoil when driving fasteners. The tool may bounce, releasing the trip, and if unintentionally allowed to recontact the work surface with the trigger still actuated finger still holding the trigger pulled an unwanted second fastener will be driven. 2. SEQUENTIAL TRIP The Sequential Trip requires the operator to hold the tool against the work before pulling the trigger. This makes accurate fastener placement easier. The Sequential Trip allows exact fastener location without the possibility of driving a second fastener on recoil as described under "Contact Trip". The Sequential Trip Tool has a positive advantage because it will not accidentally drive a fastener if the tool is contacted against the work surface or anything else while the operator is holding the trigger pulled. SELECTING THE TRIP MODE To ensure safety, the user must lock the trigger as described above before changing the trigger system. To change the trip mode, rotate the mode switch in the counterclockwise direction.

<http://www.drupalitalia.org/node/71505>